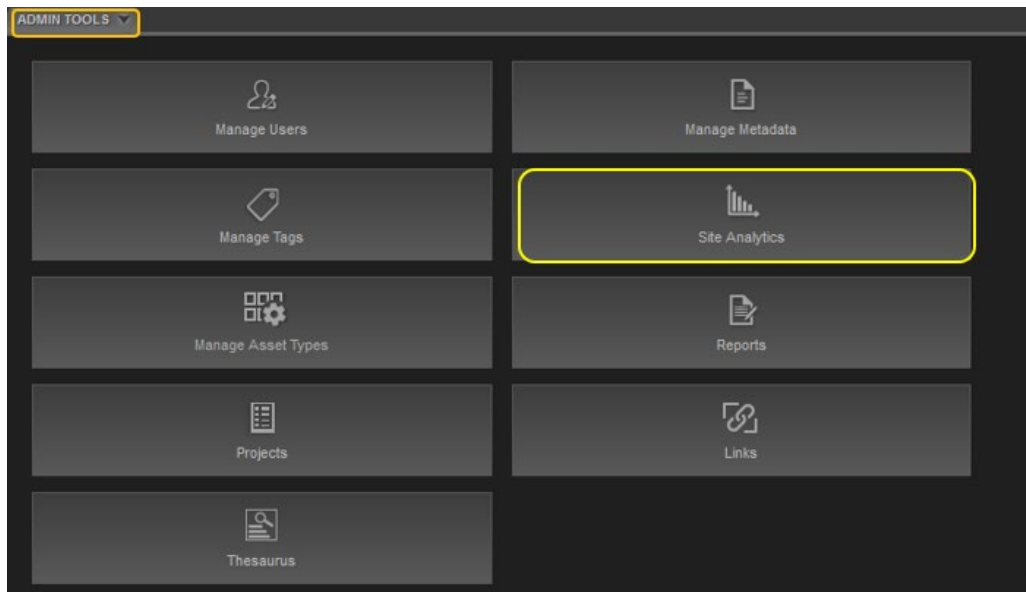


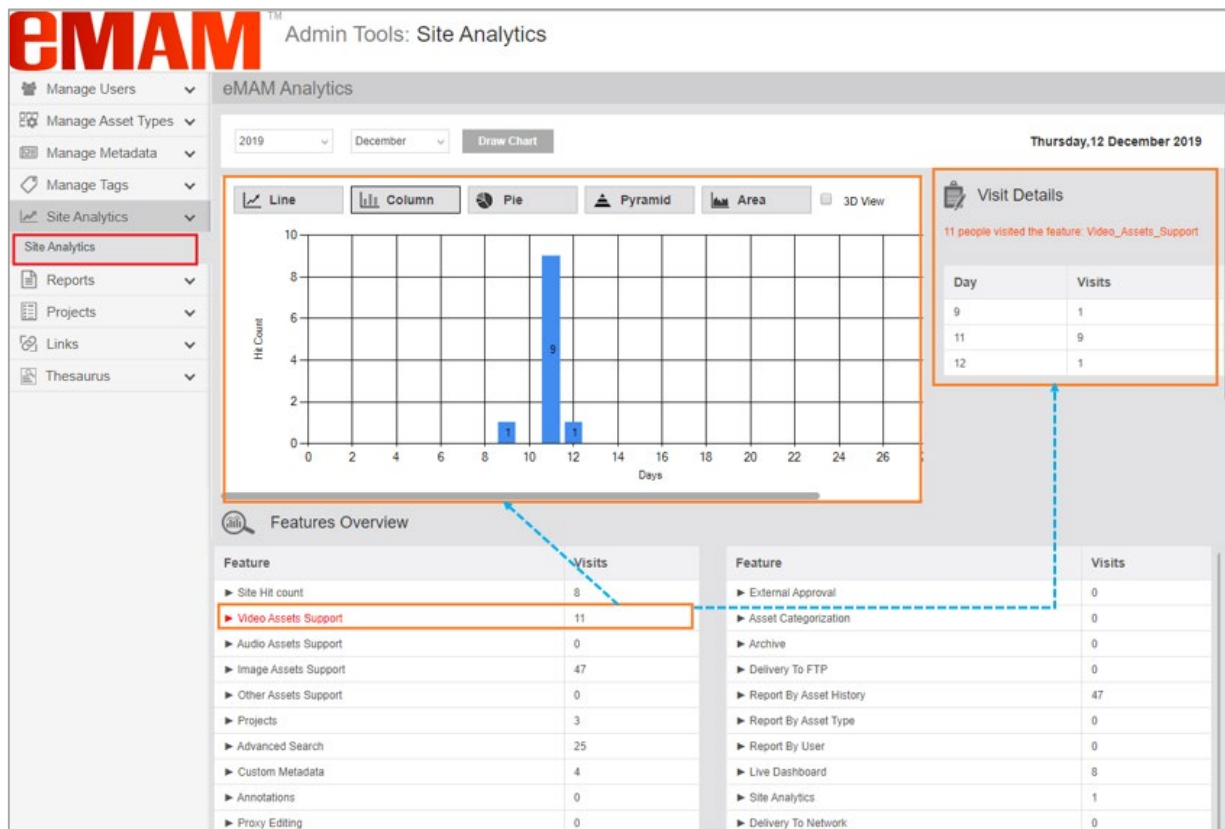
## How to use Site Analytics in the eMAM Director interface?

*Site Analytics* report can be used to analyze eMAM features usage. It can also be used to generate a graph with the number of hits plotted for the complete site during the month/year. It provides an overall exhibit about user activities of eMAM application features. Visit hit count can be analyzed for video, audio, images, and other files view, projects-assign assets to projects, advanced search, custom metadata update, annotations, subclips, archive, asset categorization, proxy editing, delivery, live dashboard, reports (*report by asset history, user and asset type*). Based on the feature selected under *Features Overview* at the bottom panel, Visit details and Chart changes on top panel.

In the Admin Tools widget, click on **Site Analytics** tab to open Admin Tools page.



In the Admin Tools page, click on the *Site Analytics* tab to expand it and see the list of reports available.

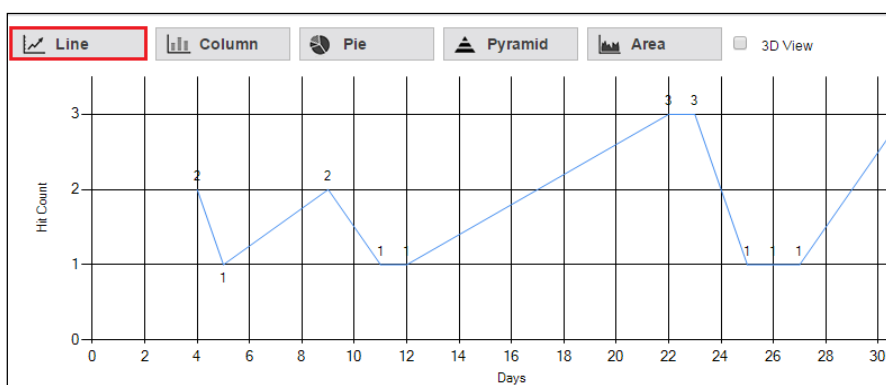


To view graph of the selected feature for a particular year, only select year from dropdown list. To view the statistical graph of a particular month, select both month and year from the dropdown list. If both year and month dropdown lists are left empty, graph displays usage of chosen feature from the time eMAM Unit Administrator had added the user/client.

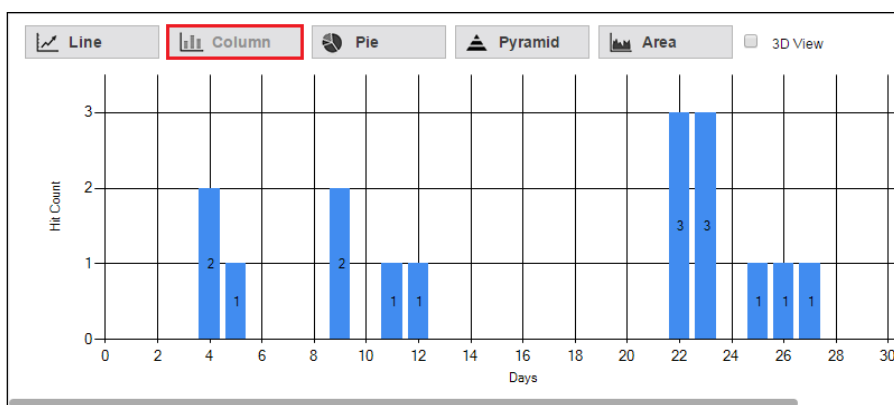
To view the graph of any feature included in the **'Features Overview'** panel, follow the steps below:

1. Click on any feature from the list of features under Features Overview E.g. Site Hit Count as shown above.
2. Select year and month from the dropdown list.
3. Click **'Draw Chart'** generate graph of the selected feature for the selected year and month. Various chart formats like Line/Column/Pie/Area/3D can be used for display as shown below:

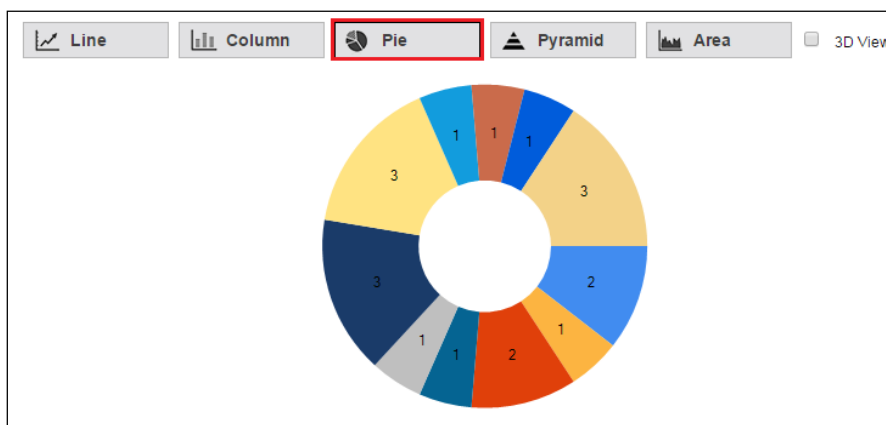
○ **Line Chart**



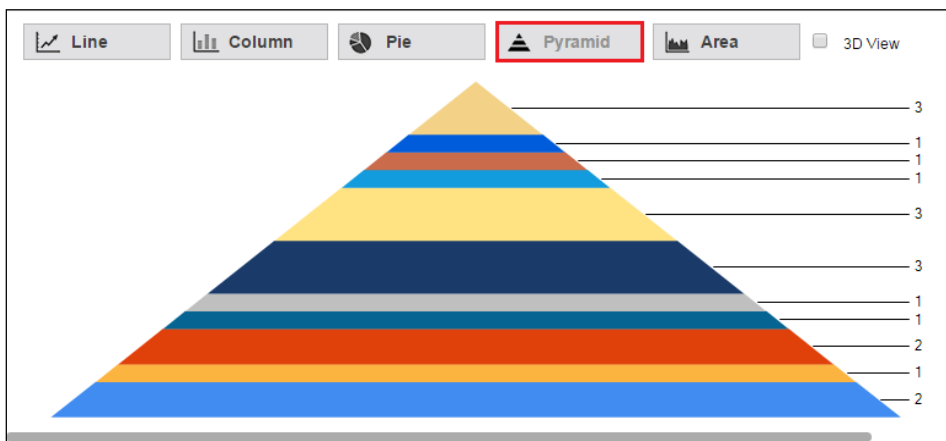
○ **Column Chart**



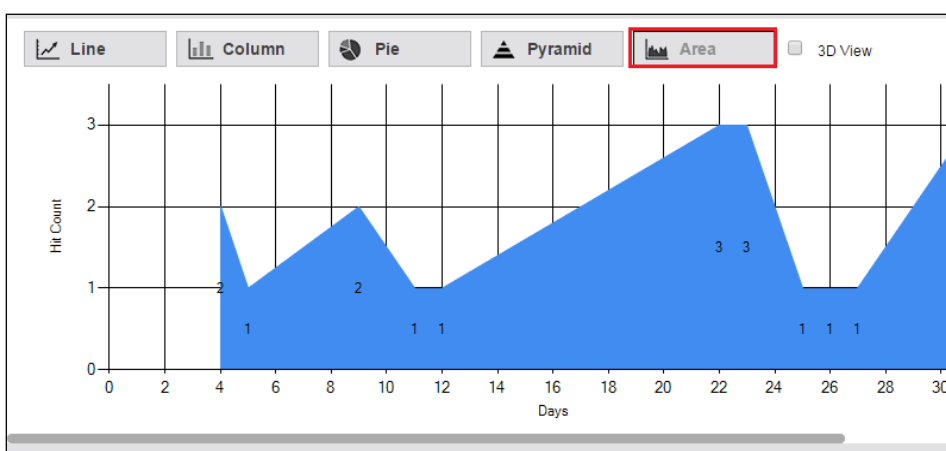
○ **Pie Chart**



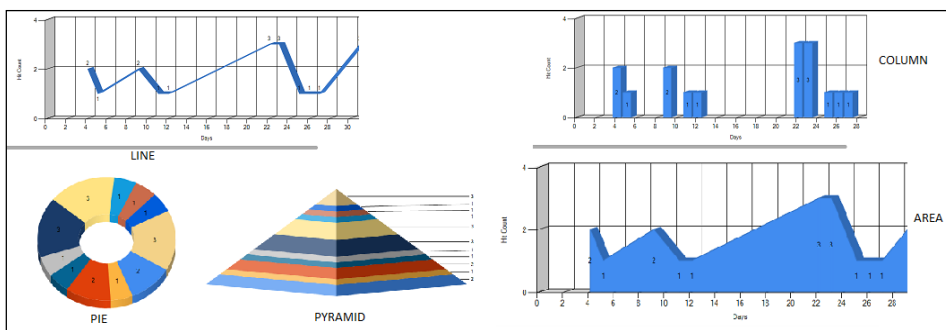
○ **Pyramid Chart**



○ **Area Chart**



○ **3D Chart:** Enable 3D checkbox for various chart formats to display charts in 3D.



**Visit Details** panel in the right displays a table that shows number of visits for the day/month/ year for the selected feature.

**Tuesday, 05 May 2020**

**Visit Details** 7 people visited the site

Day	Visits
1	4
4	1
5	2

**Visit Details** 424 people visited the site

Month	Visits
Jan	124
Feb	44
Mar	99
Apr	150
May	7

**Features Overview:** Under this tab, visit counts are displayed based of different features.

Features Overview		Features Overview	
Feature	Visits	Feature	Visits
▶ Site Hit count	19	▶ External Approval	0
▶ Video Assets Support	0	▶ Asset Categorization	0
▶ Audio Assets Support	0	▶ Archive	0
▶ Image Assets Support	4	▶ Delivery To FTP	0
▶ Other Assets Support	0	▶ Report By Asset History	0
▶ Projects	0	▶ Report By Asset Type	0
▶ Advanced Search	9	▶ Report By User	0
▶ Custom Metadata	0	▶ Live Dashboard	2
▶ Annotations	0	▶ Site Analytics	0
▶ Proxy Editing	0	▶ Delivery To Network	0
▶ Rating	0	▶ Restore	0
▶ Internal Approval	1		

List of features and detailed description of the same is mentioned below table:

Feature	Details
Site Hit count	Displays the number of times (also graphical representation) users have logged into the eMAM system.
Video Assets Support	Displays the number of times (also graphical representation) users have used the video assets.
Audio Assets Support	Displays the number of times (also graphical representation) users have used the audio assets.
Image Assets Support	Displays the number of times (also graphical representation) users have used the image assets.
Other Assets Support	Displays the number of times (also graphical representation) users have used the other files from the eMAM System.
Projects	Displays the number of times (also graphical representation) users have viewed the project feature.
Advanced Search	Displays the number of times (also graphical representation) users have used the advanced search feature.
Custom Metadata	Displays the number of times (also graphical representation) users have used the custom metadata feature.

Annotations	Displays the number of times (also graphical representation) users have used the annotations feature.
Proxy Editing	Displays the number of times (also graphical representation) users have used the proxy editing feature.
Rating	Displays the number of times (also graphical representation) users have used the rating feature.
Internal Approval	Displays the number of times (also graphical representation) users have used the internal approval feature.
External Approval	Displays the number of times (also graphical representation) users have used the external approval feature.
Asset Categorization	Displays the number of times (also graphical representation) users have used the category feature.
Archive	Displays the number of times (also graphical representation) users have used the archive feature.
Delivery To FTP	Displays the number of times (also graphical representation) users have used the delivery To FTP feature.
Report by Asset History	Displays the number of times (also graphical representation) users have viewed the asset history report.
Report by Asset Type	Displays the number of times (also graphical representation) users have viewed the asset state report.
Report by User	Displays the number of times (also graphical representation) users have viewed the user history report.
Live Dashboard	Displays the number of times (also graphical representation) users have visited the live dashboard.
Site Analytics	Displays the number of times (also graphical representation) users have used the site analytics feature.
Delivery to Network	Displays the number of times (also graphical representation) users have used the Delivery to Network feature.
Restore	Displays the number of times (also graphical representation) users have used the restore feature.

### Need Help

Please contact eMAM Support at [support@emamcloud.com](mailto:support@emamcloud.com).